

Otter Tail Power Company and **Missouri River Energy Services** (representing *Western Minnesota Municipal Power Agency*) are partnering to develop, construct, and co-own a new 345-kilovolt (kV) transmission line. The Big Stone South to Alexandria transmission line (BSSA) will connect Otter Tail Power Company's Big Stone South Substation near Big Stone City, South Dakota, to the Alexandria Substation owned by Missouri River Energy Services near Alexandria, Minnesota.

This project is needed to ensure electric reliability, increase resiliency to extreme weather events, reduce transmission congestion, and increase access to low-cost energy in the region.

MONOPOLE

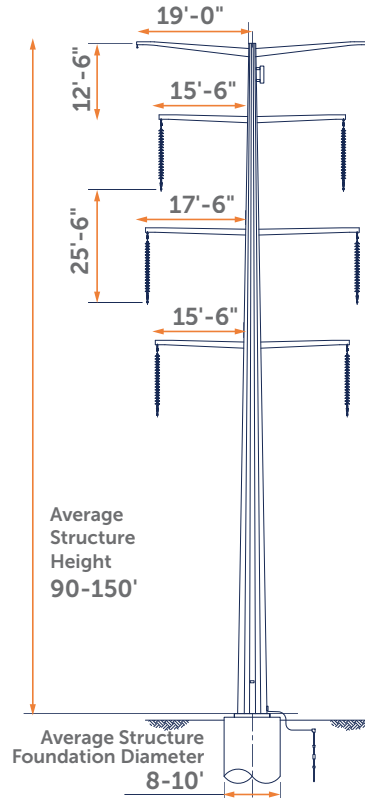
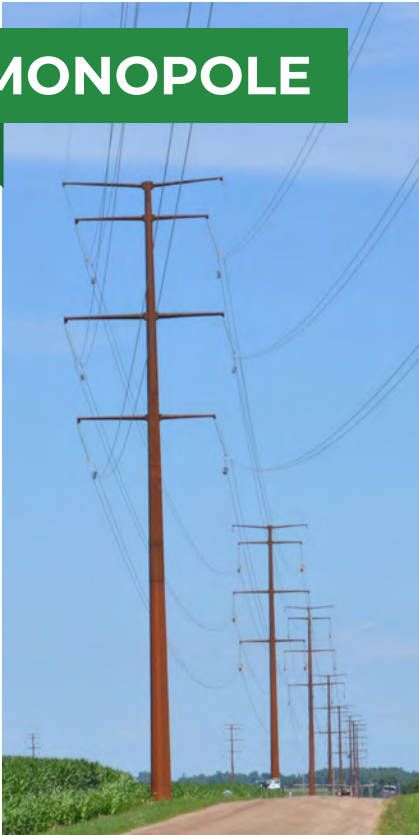


Image shown is an example of a similar double-circuit structure.

ROUTING PROCESS



DEFINE STUDY AREA



BEGIN AGENCY & LOCAL GOVERNMENT OUTREACH



HOST PUBLIC OPEN HOUSES



IDENTIFY PROJECT CORRIDORS



HOST PUBLIC OPEN HOUSES



DEVELOP ROUTE CORRIDORS



HOST PUBLIC OPEN HOUSES



DEVELOP PROPOSED ROUTE SEGMENTS



**WE ARE HERE
HOST PUBLIC OPEN HOUSES**



FILE PROPOSED ROUTES IN MN

PROJECT DEVELOPMENT

Developing and constructing a transmission line is a multi-year effort. We are gathering public feedback on the route corridors to help us develop a proposed route. We'll continue coordinating with landowners, local governments, agencies, and other stakeholders throughout the development process. The new line is tentatively scheduled to be complete in 2030 or 2031.



Engagement Opportunities

STEP 1

▶ Data Gathering

STEP 2

- ▶ Public Engagement
- ▶ Routing
- ▶ Preliminary Surveys
- ▶ Preliminary Right of Way
- ▶ Preliminary Engineering
- ▶ MN Certificate of Need Filed

STEP 3

- ▶ Right of Way
- ▶ Surveys
- ▶ Filed SD Facility Permit Application
- WE ARE HERE**
- ▶ File MN Route Permit Application
- ▶ Environmental Permits

STEP 4

STEP 5

- ▶ Permit Decisions
- ▶ Right of Way
- ▶ Final Engineering

STEP 6

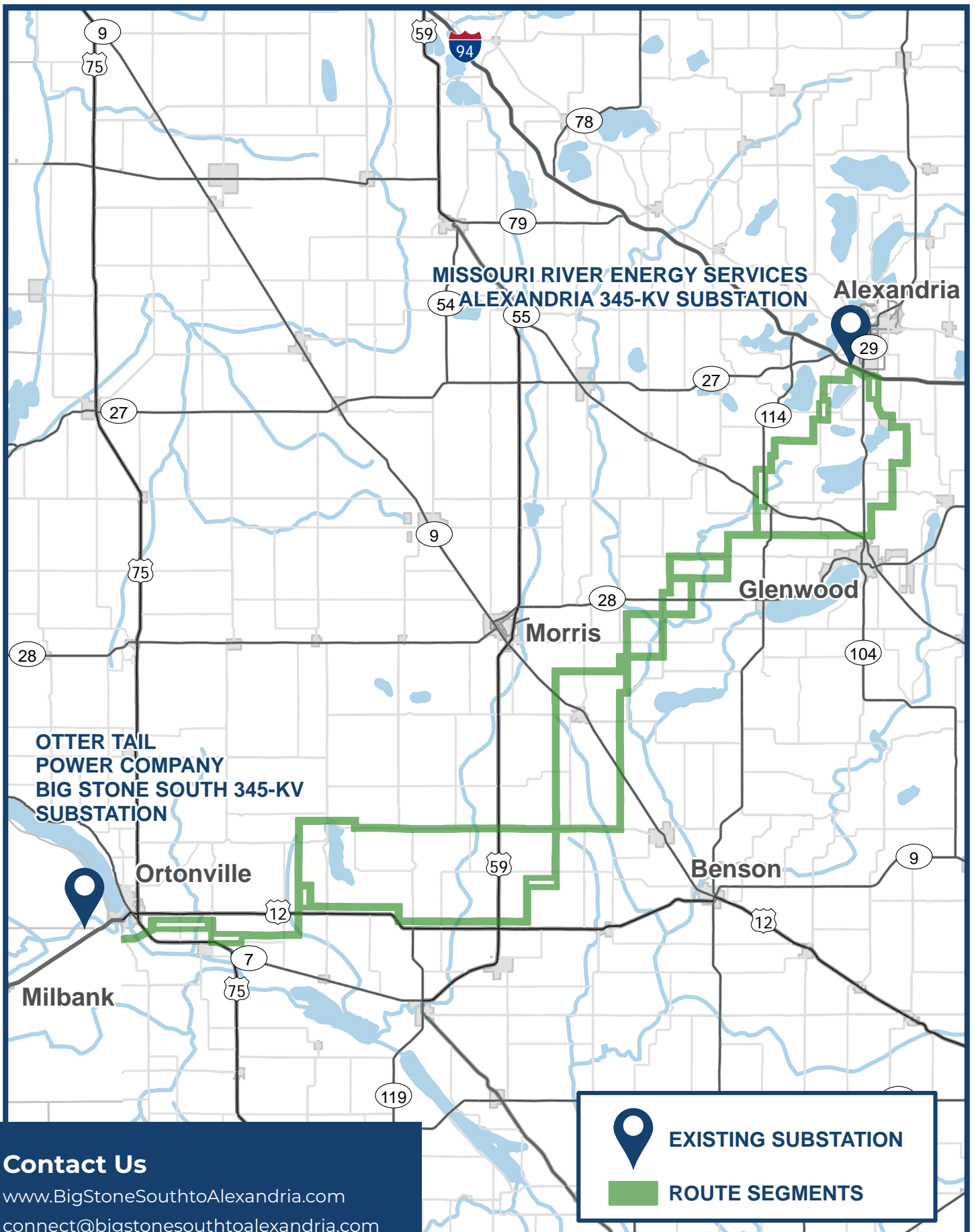
- ▶ Construction
- ▶ In Service in 2030-2031
- ▶ Restoration



Communicate Project Updates Throughout Construction

Scan the QR code to visit the project website.





▲ Route segments are marked in green on the map above and are subject to change.