



WELCOME

PUBLIC OPEN HOUSE





Both **Otter Tail Power Company** and **Missouri River Energy Services** are members of the Midcontinent Independent System Operator, also referred to as **MISO**.

MISO is a non-profit, member-based regional transmission organization that provides reliable, cost-effective electric systems and operations; dependable and transparent prices; open access to markets; and planning for long-term efficiency.

MISO has approved 18 new transmission projects throughout the Midwest that are needed to ensure a **reliable** and **resilient** transmission system in the future.

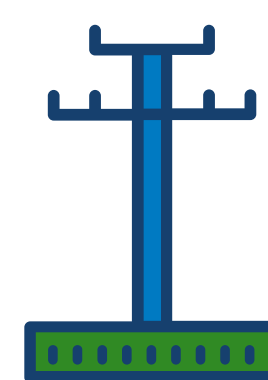


Otter Tail Power Company and **Missouri River Energy Services** (representing *Western Minnesota Municipal Power Agency*) are partnering to develop, construct, and co-own a new 345-kilovolt (kV) transmission line. The Big Stone South to Alexandria transmission line (BSSA) will connect Otter Tail Power Company's Big Stone South Substation near Big Stone City, South Dakota, to the Alexandria Substation owned by Missouri River Energy Services near Alexandria, Minnesota.

The project will benefit the region by helping to:



Ensure electric reliability



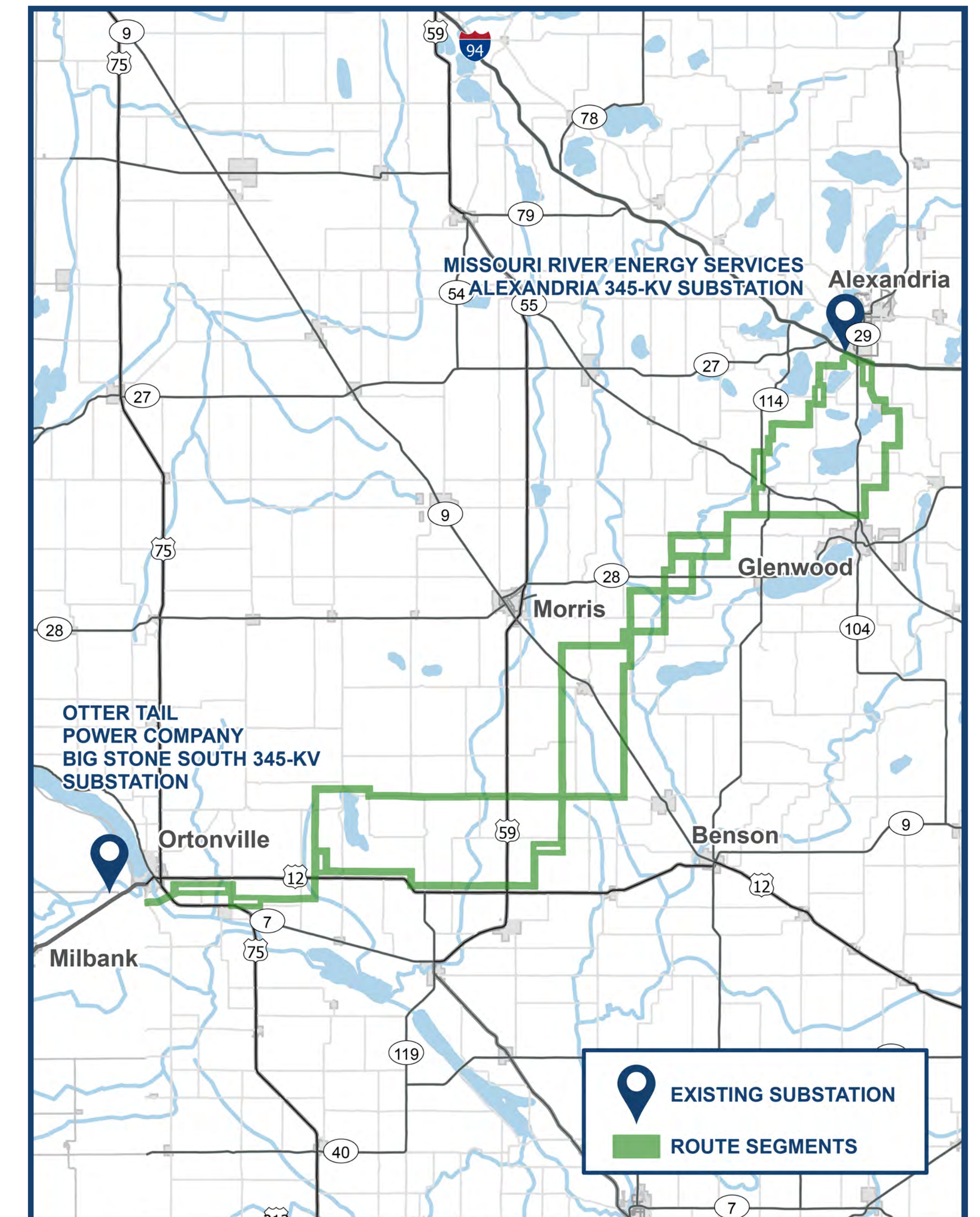
Reduce transmission congestion



Increase access to low-cost energy



Increase resiliency to extreme weather events

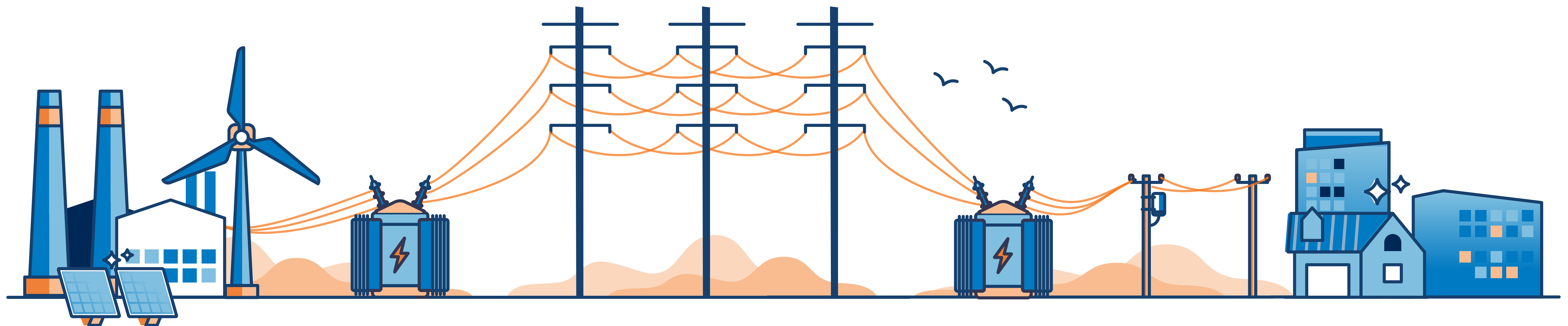


▲ Route segments are marked in green on the map above and are subject to change.

1 Electricity can be generated in many ways, including coal-fired plants, wind power, combustion turbines, solar power, and hydroelectric plants.

3 Transmission lines move high-voltage electricity long distances from where it's generated to where it'll be used.

5 Distribution lines move low-voltage electricity to neighborhoods and communities.



2 Electricity connects to the high-voltage transmission system through a transformer.

4 Transformers lower the voltage of electricity for homes and businesses

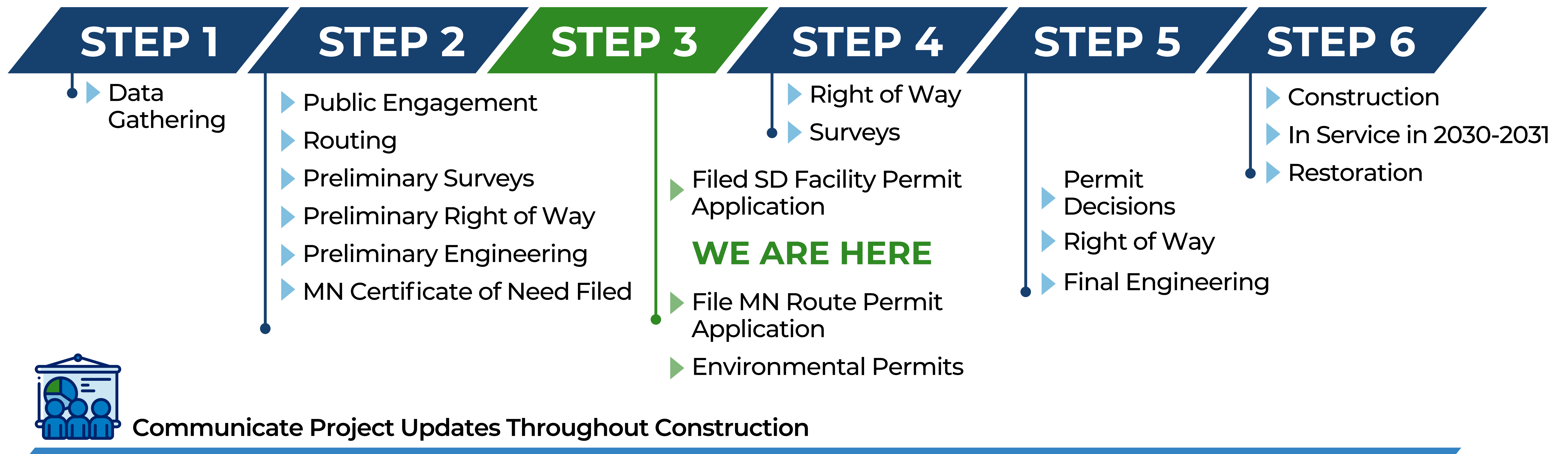
Generation

Transmission

Distribution



Engagement Opportunities



Processes and timing may vary from Minnesota to South Dakota. Our project team will refine the timing of these steps to comply with each respective state's requirements.

The BSSA transmission line will be constructed in both **Minnesota** and **South Dakota**, and the two states have different processes and timelines. Both state processes are compliant with relevant laws and rules, and consider potential impacts on the environment, residents in the routing area, and orderly development of the region. After we've filed, the Public Utilities Commission (PUC) in each state will provide opportunities for additional feedback through public hearings.



MINNESOTA

Two major approvals must be obtained from the **Minnesota (MN) PUC** before a high-voltage transmission line can be built: a Certificate of Need and a Route Permit. The Certificate of Need proceeding examines whether the proposed facilities are necessary and what the appropriate size, configuration, and timing of the project should be. In a separate Route Permit proceeding, the MN PUC determines the route of the line.



Certificate of Need

- ▶ Public hearings



Route Permit

- ▶ Public hearings

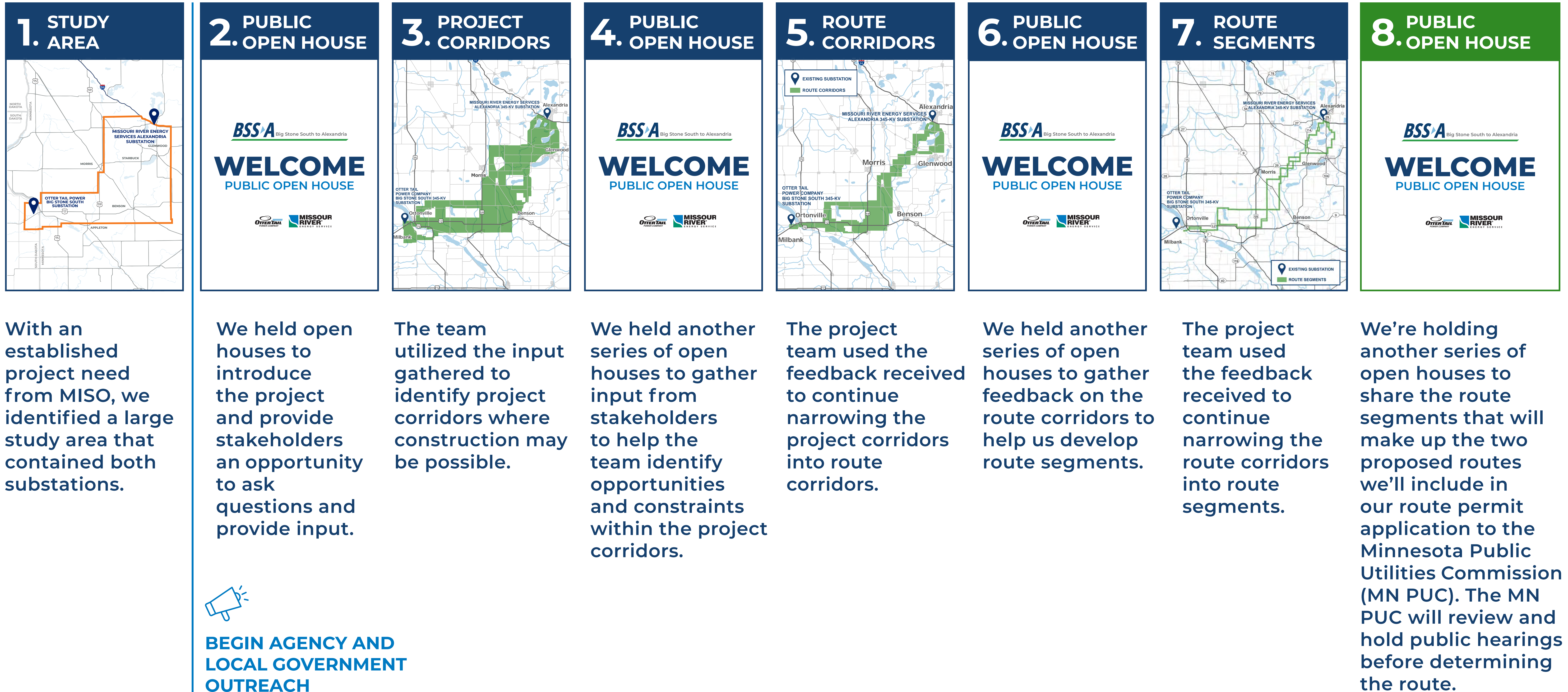


Route Permit Application Decision

- ▶ Estimated timeline is 18-24 months from time of Route Permit application filing. We plan to file in Q4 of 2024.

We filed our facility permit in South Dakota!

WE ARE HERE



BEGIN AGENCY AND LOCAL GOVERNMENT OUTREACH

MONOPOLE

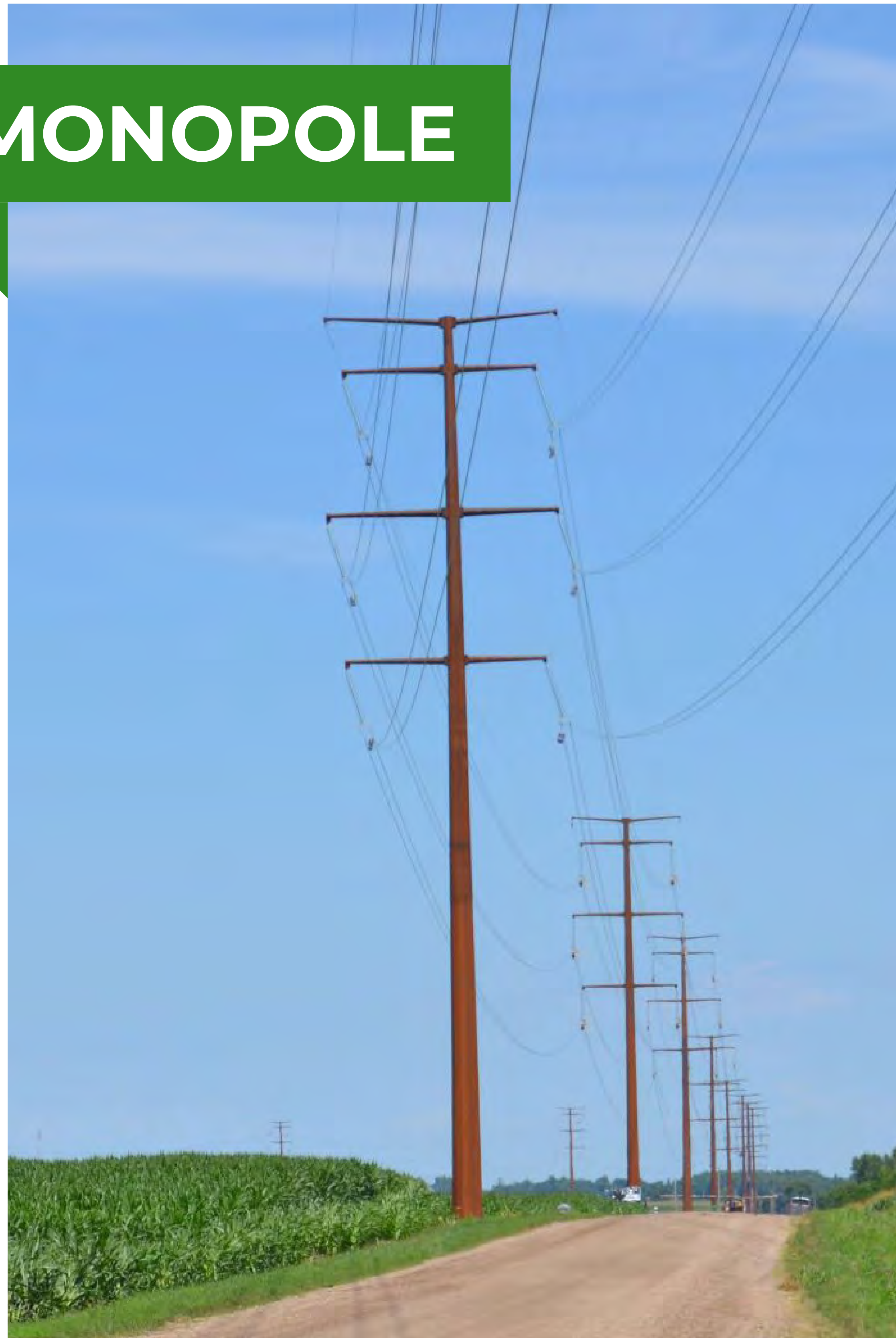


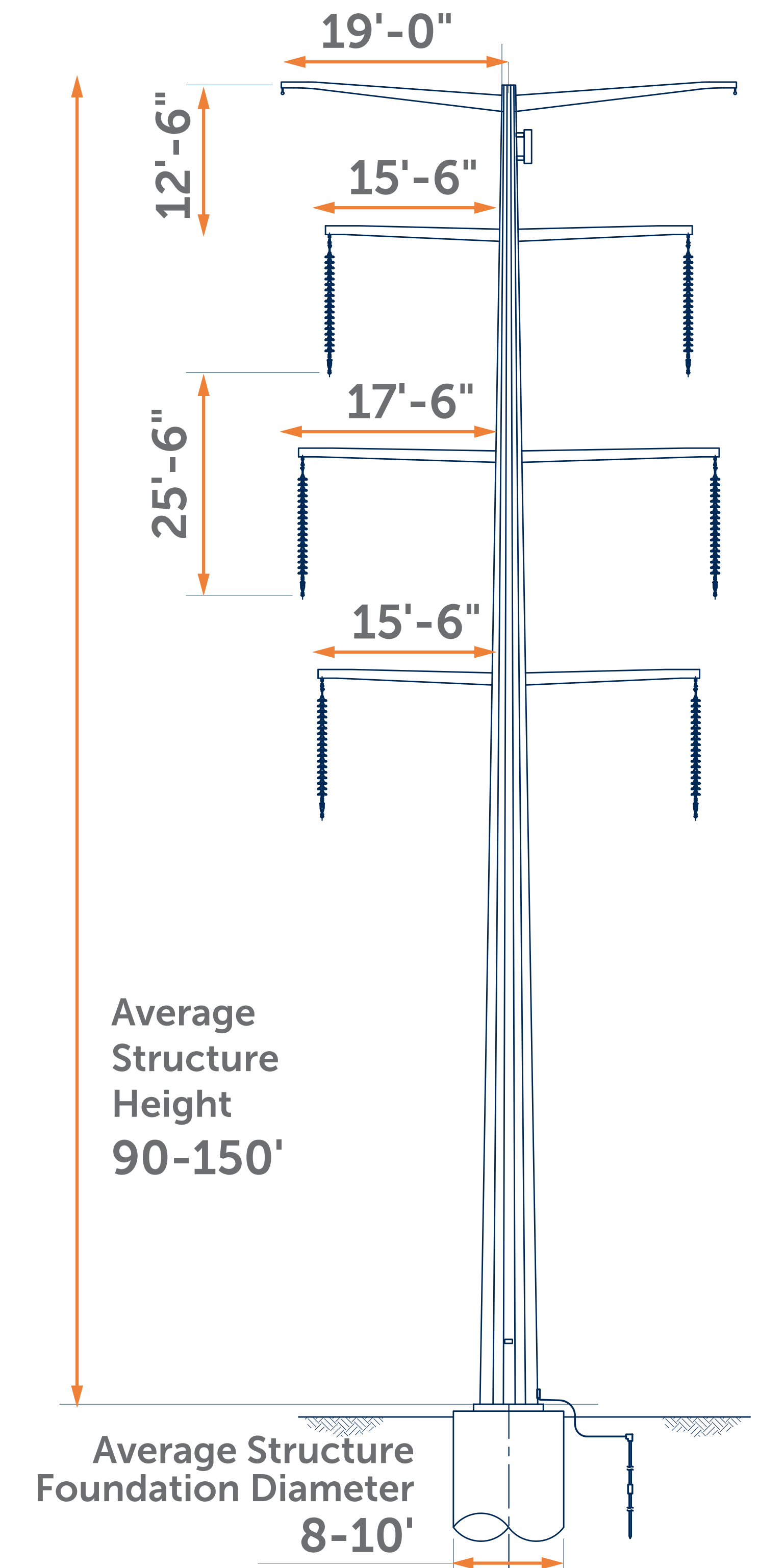
Image shown is an example of a similar double-circuit structure.

The typical structure will be 150 feet tall.

The structure type may vary across the project but primarily will be comprised of single pole, self-weathering steel with double-circuit capability.

Otter Tail Power Company and **Missouri River Energy Services** expect to only install one circuit at this time.

There will be three phases of conductors and two overhead shield wires — one will be an optical ground wire (OPGW) and the other stranded steel (overhead ground wire).



ONGOING OUTREACH

Long before construction begins, right-of-way agents will be coordinating with landowners, local government officials, and other stakeholders. You will be involved throughout the process, and if you have any questions or concerns, our project team will work with you!

1.



Surveying

2.



Temporary Access

3.



**Foundation Drilling
& Pouring**

4.



Structure Setting

5.



Conductor Stringing

6.



Restoration

? What is Right of Way?

Right of way is a portion of land needed for the construction, operation, and maintenance of the transmission line. Typically a width of 150 feet is needed for a 345-kilovolt (kV) transmission line. Right of way is typically secured through negotiation and acquisition of an easement agreement.

? What is Right of Entry?

To assess potential routes and conduct the necessary environmental and engineering studies/surveys, right-of-way agents will work with landowners and residents to acquire a temporary right-of-entry agreement. This agreement does not give permission for construction.

? What is an Easement?

An easement is the legal document that allows Otter Tail Power Company and Missouri River Energy Services to construct, operate, and maintain transmission structures and lines on your property.

A **150-foot-wide easement** will be necessary to construct, operate, and maintain the proposed 345-kV transmission line.

? Right of way agents will reach out to landowners to begin the right of entry process

1



We'll notify landowners in the project area, and right-of-way agents will reach out to request right of entry.

3



We'll work with landowners to resolve any questions or concerns.

2



Once the project receives the final approval with a determined route, a right-of-way agent will present the landowner with an easement offer based on fair market value.

4



The utilities will construct, operate, and maintain the transmission line.

You will be involved throughout the process, and if you have any questions or concerns, our project team will work with you!

Stay Informed

To stay up-to-date on the project, visit our website at:



www.BigStoneSouthtoAlexandria.com

Use your phone's
camera to scan
the QR code.



Get Connected

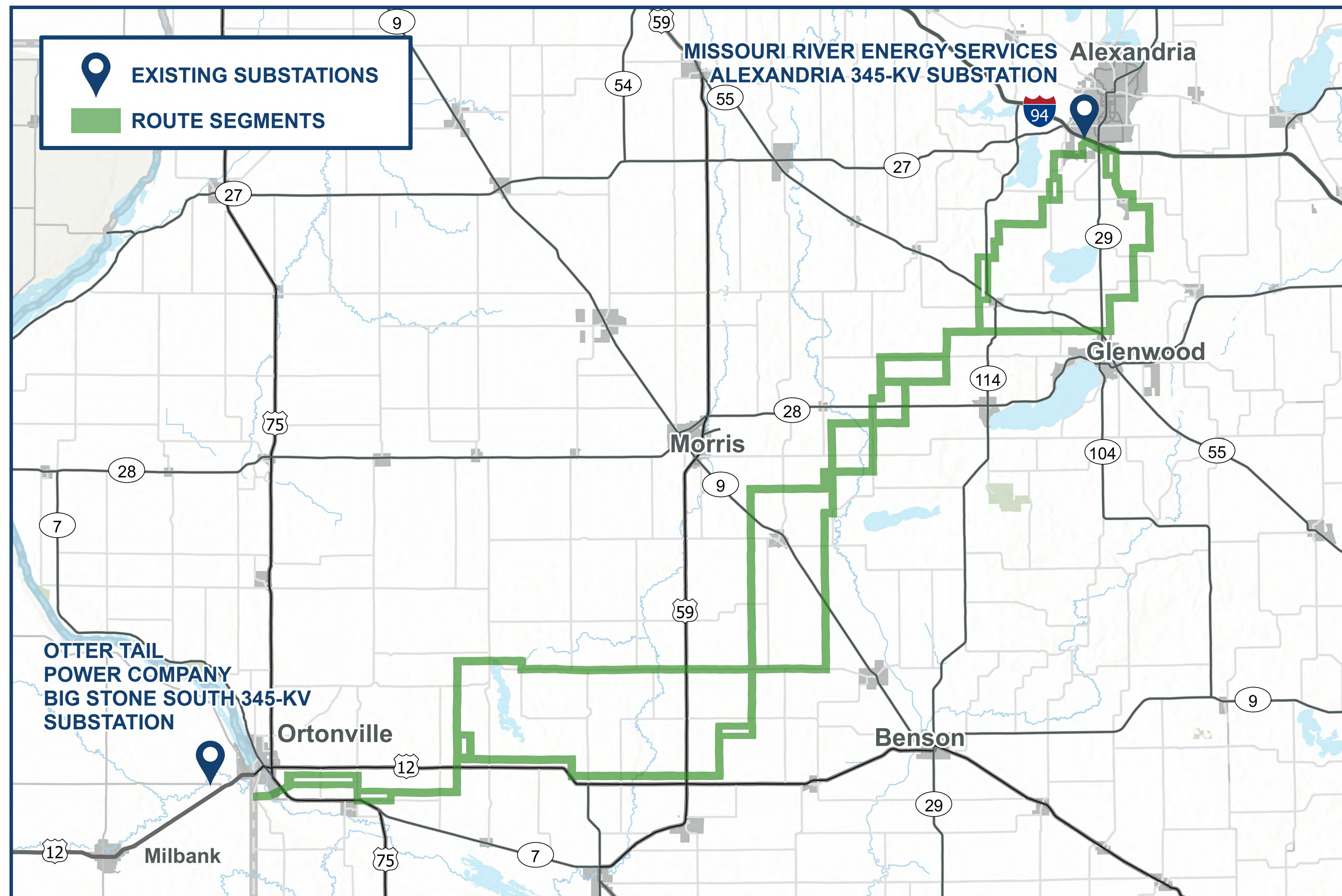
There will be opportunities to participate throughout the project development and permitting process. You can submit feedback, attend public meetings, ask questions, or request an information packet to learn more!



Questions or comments about the project?

connect@BigStoneSouthtoAlexandria.com

(800) 598-5587



Route segments are marked in green on the map above and are subject to change.